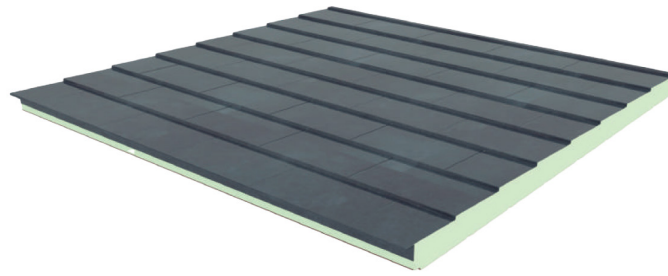
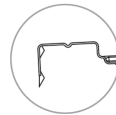
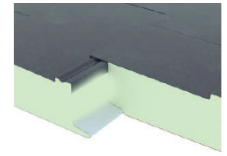




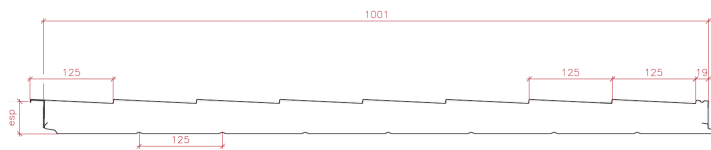
PANEL SANDWICH IMITACIÓN PIZARRA



DETALLE DEL ENCAJE



Anti - Drip



Esesor nominal panel (mm)	40	50	60	80	100	120
Transmitancia térmica UNE EN 14509 A.10 U (W/m ² K)	0,56	0,45	0,38	0,28	0,23	0,19

TABLA DE CARGAS

USO DE CUBIERTAS

Esesor medio panel (mm)	Esesor nominal soportes acero		Peso nominal panel (kg/m ²)	Ancho eficaz apoyo: 100 mm															
	Soporte externo (mm)	Soporte interno (mm)																	
				l=cm	150	175	200	225	250	275	300	325	350	375	400	425	450	475	500
40	0,50	0,40	8,4	P = kg/m ²	180	140	110	85	70	55									
50	0,50	0,40	8,8	P = kg/m ²	230	185	145	120	100	80	65	55							
60	0,50	0,40	9,2	P = kg/m ²	280	225	185	150	125	105	90	75	60	50					
80	0,50	0,40	10,0	P = kg/m ²	360	295	245	205	175	150	130	110	95	80	70	60	55		
100	0,50	0,40	10,8	P = kg/m ²	435	360	300	255	220	190	165	145	125	110	100	85	75	65	60
120	0,50	0,40	11,6	P = kg/m ²	495	410	350	300	260	225	200	175	155	140	120	110	95	85	75